



**ROCKPARK
PROPERTY
GROUP**

326 Saint Paul Place • Baltimore, MD 21202

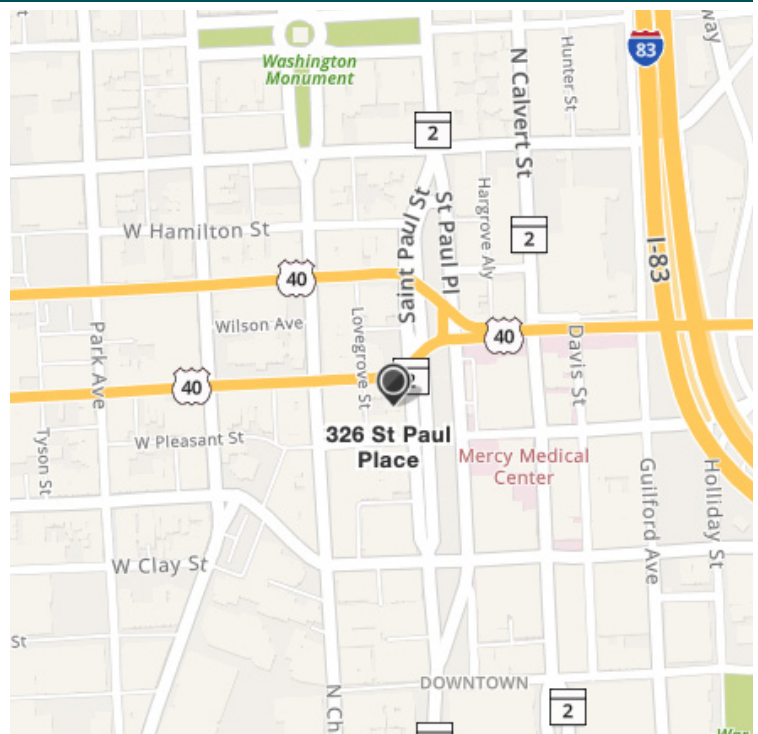


13,532 sf in Central Business District

FOR SALE

PROPERTY SUMMARY

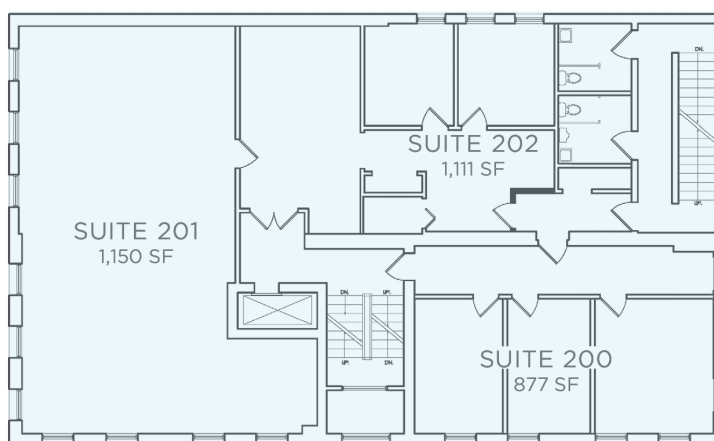
- Renovated in 2019
- 13,532 sf Office Building
- Zoning: L-5HT
- Located in Central Business District
- Located across from Mercy Medical Center



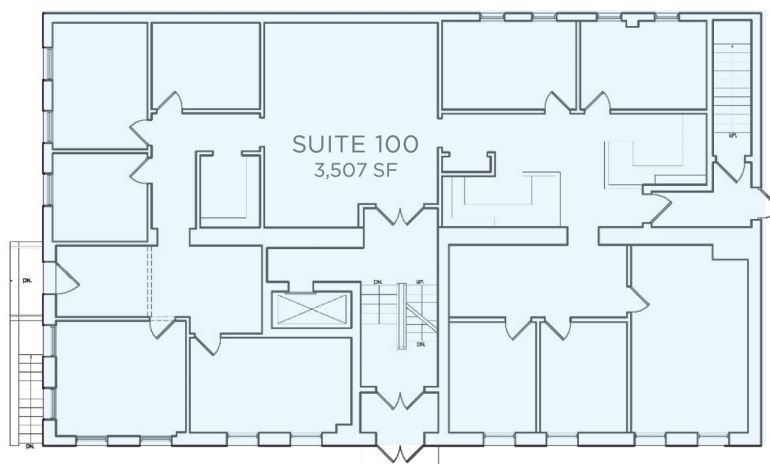
Jon Schulman
jschulman@rockparkpg.com
410.427.6703

1 Olympic Place, Suite 1200
Towson, MD 21204
rockparkpg.com

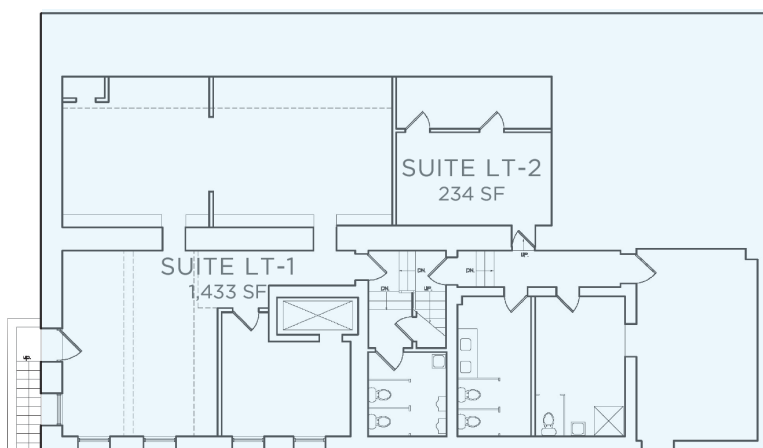
2ND FLOOR



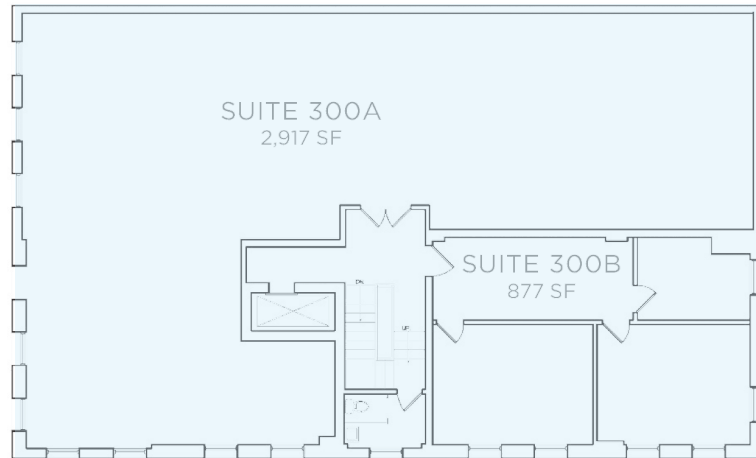
1st FLOOR



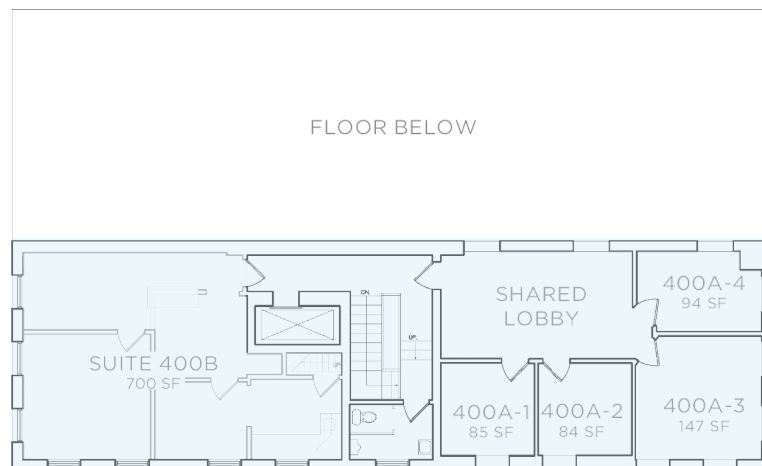
BASEMENT



3RD FLOOR



4TH FLOOR



326 Saint Paul Place • Baltimore, MD 21202

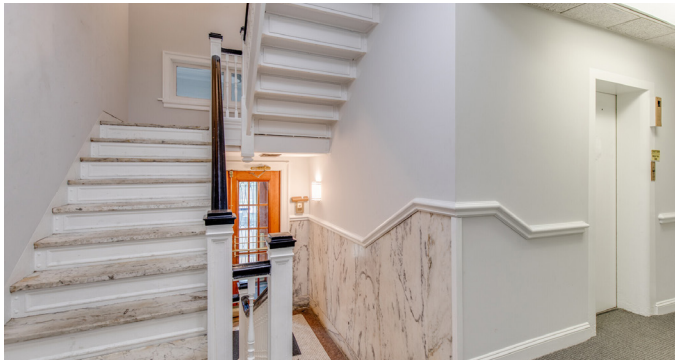
PHOTOS



WAITING ROOM



CONFERENCE ROOM



HALLWAY



SHARED KITCHEN



COLLABORATIVE AREA



PERSONAL OFFICE

Jon Schulman
jschulman@rockparkpg.com
410.427.6703

1 Olympic Place, Suite 1200
Towson, MD 21204
rockparkpg.com



FOR MORE INFORMATION PLEASE CONTACT:

Jon Schulman

jschulman@rockparkpg.com

410.427.6703

1 Olympic Place, Suite 1200

Towson, MD 21204

rockparkpg.com

While we have no reason to doubt the accuracy of any of the information supplied, we cannot and do not, guarantee its accuracy. All information should be independently verified prior to a purchase or lease of the property. We are not responsible for errors, omissions, misuse, or misrepresentation of information contained herein and make no warranty of any kind, express or implied, with respect to the property or any other matters.